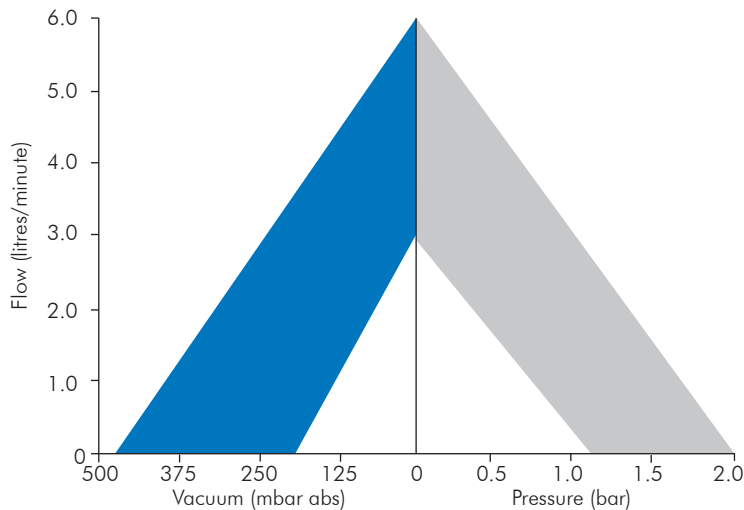




D3, D5 & D6 series

Oil-Free - Liquid Diaphragm Pumps

Performance Ranges Available



D3



D5(DC)



D5(AC)



D6



Features

- Clean oil free vacuum and pressure source in a very quiet, low cost compact unit.
- Lightweight components, slim line design and low operating current - ideal for applications where space is at a premium.
- Models can be upgraded with an optional variety of materials resistant to a wide range of corrosive gases and vapours.
- Optional brushless motor designed for continuous duty, low maintenance applications
- Models available for use with AC or DC supply.

Application Ideas

- Environmental Monitoring & Gas Sampling
- Wound Therapy Devices
- IVD Analysers





D3, D5 & D6 series

Oil-Free - Liquid Diaphragm Pumps

Performance

Model no.	Max. free flow l/min	Max. vacuum mbar (abs)	Max. Pressure bar
D3	3.0	350	1.8
D5 (DC)	5.0	190	2.0
D5 (AC)	5.0	480	1.1
D6	6.0	200	2.1

Component	Standard	Options
Head	Nylon	Polypropylene
Diaphragm	EPDM	PTFE, Viton
Valves & Gasket	EPDM	PTFE, Viton
Clamp Plate	Nylon	Stainless Steel
Screw	Stainless Steel	-
Pins	Stainless Steel	PVDF

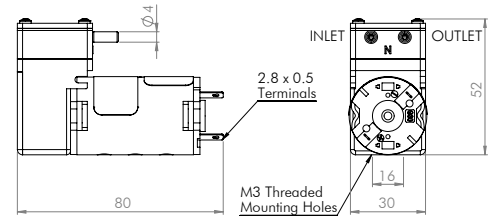
Motor Options

Model no.	12V DC			24V DC		
	Operating Current	Max Load	Fuse Rating	Operating Current	Max Load	Fuse Rating
D3	0.5A	0.5A	1.0A	0.15A	0.25A	0.5A
D3 BLDC	0.4A	0.45A	1.0A	0.2A	0.25A	0.5A
D5 (DC)	0.7A	0.85A	2.0A	0.2A	0.4A	2.0A
D6	0.3A	0.6A	2.0A	N/A	N/A	N/A

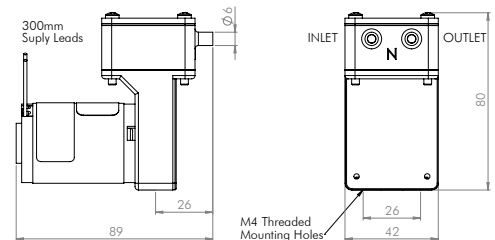
Model no.	110/115V 50/60Hz			230V 50Hz		
	Operating Current	Max Load	Fuse Rating	Operating Current	Max Load	Fuse Rating
D5 (AC)	0.4A	0.6A	0.75A	0.25A	0.3A	0.5A

Dimensions (mm)

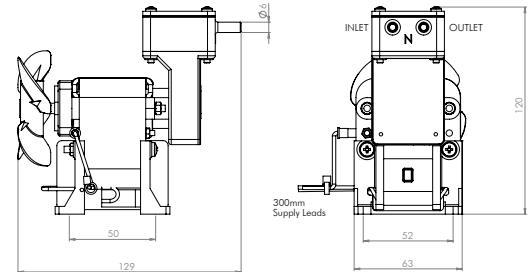
D3 150g



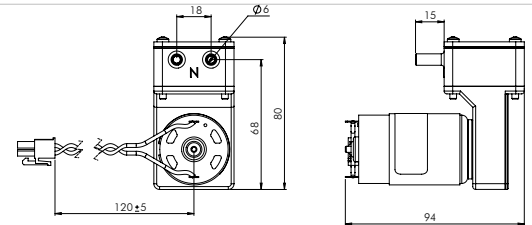
D5(DC) 300g



D5(AC) 700g



D6 700g



Please note - it is important that you ensure the motor specification stated and the range of materials offered in the pump are compatible with the performance, environmental limitations and chemical resistance requirements of the application.

For further information or details of our extensive range of pumps, contact our technical sales office who will be pleased to help you select the most suitable pump for your application.

S30-252